



Hotels

**AN OASIS IN THE MIDDLE
OF YOUR ADVENTURE**

A HOTEL FOR EVERY STYLE AND BUDGET

From full-service hotels with a broad range of amenities to affordable accommodations featuring value-oriented standard rooms and suites, all of Universal Orlando's hotels offer exclusive theme park benefits. It's the best way to experience Universal.

The **Signature Collection** offers expansive, full-service amenities, exceptional dining, distinguished service, immersive theming, and an array of the most exclusive theme park benefits.

Universal's **Prime Value Hotels** are the sweet spot, with a mix of services and amenities made for comfort and affordability. Guests at these hotels enjoy thoughtful, resort-style conveniences, an array of fast-casual dining options, and exclusive theme park benefits.

Universal's **Value Inns and Suites** are the fun, affordable option offering rooms as well as spacious suites with kitchenettes. With quick-service dining, resort-style amenities and convenient service, these hotels offer guests exactly what they need, including exclusive theme park benefits.



EXCLUSIVE BENEFITS ONLY FOR UNIVERSAL ORLANDO HOTEL GUESTS

EARLY PARK ADMISSION

Breeze into the parks before regular guests.*

(Valid theme park admission required. Select attractions.)

UNIVERSAL EXPRESS UNLIMITED RIDE ACCESS^

Enjoy shorter wait times to get more rides, more often.

(Valid theme park admission required. Select attractions. Not valid at Universal Volcano Bay or Universal Epic Universe. Select hotels.)

FREE WATER TAXI¹ & SHUTTLES

for an easy hop to and from your hotel.

(¹Water taxi accessible from Loews Portofino Bay Hotel, Hard Rock Hotel®, Loews Royal Pacific Resort or Loews Sapphire Falls Resort and not available for transportation to Universal Volcano Bay or Universal Epic Universe.)

RESORT-WIDE CHARGING PRIVILEGES

Use your room key across Universal.

COMPLIMENTARY MERCHANDISE DELIVERY[†]

from Universal shops to your hotel.

PRIORITY SEATING

at most Universal restaurants.

(Select hotels.)

DEDICATED WALKING PATH

Straight to the nearest theme park from your hotel.

(Separate theme park admission required for park entry. Select hotels.)

*, ^, † See back cover for details





**DEDICATED ENTRANCE TO
UNIVERSAL EPIC UNIVERSE**

Guests of Universal Helios
Grand Hotel, a Loews Hotel,
will enjoy a dedicated
entrance to the Park.

(Separate Universal Epic Universe theme park
admission required and not included.)

**EXCLUSIVE THEME
PARK BENEFITS**

**EARLY PARK
ADMISSION***
Separate theme park admission
required. Select attractions.

**FREE
SHUTTLES**

**RESORT-WIDE
CHARGING
PRIVILEGES**

**FREE
MERCHANDISE
DELIVERY**

**DEDICATED ENTRYWAY TO
UNIVERSAL EPIC UNIVERSE**



UNIVERSAL HELIOS GRAND HOTEL, A LOEWS HOTEL



SIGNATURE COLLECTION

\$\$\$\$

Universal Helios Grand Hotel, a Loews Hotel, is a majestic escape with a casual, elegant, Mediterranean-inspired feel throughout.

**LOCATED AT UNIVERSAL
EPIC UNIVERSE AND HAS
A DEDICATED ENTRANCE
TO THE PARK**

(Separate theme park admission required for park entry.)

Accommodations

- 500 rooms and suites
- Standard rooms feature two queen beds that sleep up to five with rollaway or one king bed that sleeps up to three with rollaway††
- Select from multiple suites for even more space
- How to Train Your Dragon themed kids' suites feature a separate kids' bedroom accessible through the shared family living space
- Club Level Rooms
- Rooms with Universal Epic Universe View

Recreation

- Zero entry pool with underwater speakers, terraced deck, fire pit area, hot tub, cabana rentals, and poolside activities, including pool side movies (weather permitting)
- Complimentary fitness center
- Game Room (Fees apply)

Dining at Universal Helios Grand Hotel

Full service

- Flora Taverna—Three-meal restaurant offering a full breakfast buffet, Mediterranean comfort foods and lobby bar**
- Lotus Lagoon—Poolside bar** serves frozen cocktails, snacks and appetizers
- Bar Helios—Rooftop bar** with exciting beverage options, delicious comfort food and creative tapas

Quick service

- Aurora Market—Contemporary grab & go spot in the lobby

And more

- Room Service—24 hours

**Must be 21+ with valid photo ID to purchase and consume alcoholic beverages. ††See back cover for details.

**EXCLUSIVE THEME
PARK BENEFITS**

**FREE UNIVERSAL
EXPRESS
UNLIMITED[^]**

**EARLY PARK
ADMISSION[†]**
Separate theme park admission
required. Select attractions.

**FREE
WATER TAXIS[†]
AND SHUTTLES**

**RESORT-WIDE
CHARGING
PRIVILEGES**

**FREE
MERCHANDISE
DELIVERY**

**PRIORITY
SEATING**



LOEWS PORTOFINO BAY HOTEL

SIGNATURE COLLECTION

\$\$\$\$

Beauty and charm
inspired by the
famed Mediterranean
seaside village.

**INCLUDES FREE[^]
UNIVERSAL EXPRESS
UNLIMITED
RIDE ACCESS**

A value of \$259.99
per person, per day[†]

(Valid theme park admission required.)

Accommodations

- 750 standard rooms and suites.
- Standard rooms feature two queen beds that sleep up to five with rollaway or one king bed that sleeps up to three with rollaway^{††}
- Select from multiple suites for even more space
- Despicable Me themed kids' suites feature a separate kids' bedroom accessible only through the parents' room
- Club Level Rooms

Recreation

- Three beautiful pools, one offering a sandy shore and a waterslide, another with serene views and cabana rentals, and a third tucked away as a secluded retreat
- Complimentary fitness center
- Game Room (Fees apply)

Entertainment

- Musica della Notte—Live sunset serenade on the piazza featuring Italian Opera (weather permitting)
- Harbor Nights—A celebration of music, food and wine (Select nights; Fees apply)

Dining at Portofino Bay Hotel

Full service

- Mama Della's RistoranteSM—Italian home cooking
- Bice Ristorante—Elegant Italian cuisine
- Trattoria del PortoTM—Casual family fare
- Splendido Bar & GrillTM—Poolside bar^{**} serves specialty drinks, burgers, sandwiches and more
- The Thirsty FishTM—Waterfront bar^{**}

Quick service

- Sal's Market DeliTM—Pizzas, sandwiches, salads
- Gelateria—Enjoy artisan gelato, milkshakes, or smoothies
- Caffè Espresso—Proudly offers Starbucks[®] Coffee, breakfast items, and pastries

And more

- Room Service—24 hours

^{**}Must be 21+ with valid photo ID to purchase and consume alcoholic beverages.
^{†, ††}See back cover for details.

**EXCLUSIVE THEME
PARK BENEFITS**

**FREE UNIVERSAL
EXPRESS
UNLIMITED[^]**

**EARLY PARK
ADMISSION***
Separate theme park admission
required. Select attractions.

**FREE
WATER TAXIS*
AND SHUTTLES**

**RESORT-WIDE
CHARGING
PRIVILEGES**

**FREE
MERCHANDISE
DELIVERY**

**PRIORITY
SEATING**



HARD ROCK HOTEL[®]

SIGNATURE COLLECTION

\$\$\$\$

The coolest hotel on the planet. Live like a star and get treated like a celebrity with impeccable surroundings, laid-back attitude and show-stopping service.

**INCLUDES FREE
UNIVERSAL EXPRESS
UNLIMITED
RIDE ACCESS[^]**

A value of \$259.99
per person, per day[†]

(Valid theme park admission required.)

Accommodations

- 650 standard rooms and suites
- Standard rooms feature two queen beds that sleep up to five with rollaway^{††}
- Select from multiple suites for even more space
- Future Rock Star themed kids' suites feature a separate kids' bedroom accessible only through the parents' room
- Club Level Rooms

Recreation

- Wide open pool, white-sand beach, underwater music, waterslide, cabana rentals, volleyball
- Complimentary fitness center
- Game room. (Fees apply)
- The Sound of Your Stay—Free all-encompassing music amenity program

Entertainment

- Velvet Sessions—Enjoy live music performed by real artists (Concerts on select nights. Must be 21+. Fees apply.)

^{**}Must be 21+ with valid photo ID to purchase and consume alcoholic beverages. [†], ^{††}See back cover for details.

Dining at Hard Rock Hotel[®]

Full service

- The Kitchen—Awesome American classics
- The Palm—Famous steak and seafood
- beachclub—Poolside bar^{**} & grill

Quick service

- Emack & Bolio's—Ice cream shop, Starbucks[®] coffee, snacks and grab and go
- Velvet Bar—Sleek lobby level bar^{**}

And more

- Room Service—24 hours

**EXCLUSIVE THEME
PARK BENEFITS**

**FREE UNIVERSAL
EXPRESS
UNLIMITED[^]**

**EARLY PARK
ADMISSION^{*}**
Separate theme park admission
required. Select attractions.

**FREE
WATER TAXIS¹
AND SHUTTLES**

**RESORT-WIDE
CHARGING
PRIVILEGES**

**FREE
MERCHANTISE
DELIVERY**

**PRIORITY
SEATING**



LOEWS ROYAL PACIFIC RESORT

SIGNATURE COLLECTION

\$\$\$\$

Get swept away to a South
Seas escape filled with
tropical wonders and
carefree fun.

**INCLUDES FREE
UNIVERSAL EXPRESS
UNLIMITED
RIDE ACCESS[^]**

A value of \$259.99
per person, per day^{*}

(Valid theme park admission required.)

Accommodations

- 1,000 standard rooms and suites.
- Standard rooms feature two queen beds that sleep up to five with rollaway or one king bed that sleeps up to three with rollaway^{††}
- Select from multiple suites for even more space
- Jurassic World themed kids' suites feature a separate kids' bedroom accessible only through the parents' room
- Club Level Rooms

Recreation

- Palm-tree lined lagoon-style pool, hot tubs, interactive water play area for kids, and cabana rentals
- Complimentary fitness center
- Game room (Fees apply)

Dining at Royal Pacific Resort

Full service

- Islands Dining Room—Mornings: breakfast favorites; Evenings: Pan Asian cuisine
- Jake's American Bar—Full-service bar,** fully flavorful menu from apps to entrees
- Orchid Court Lounge & Sushi Bar—Evenings: sushi, martinis** and more
- Bula Bar & Grill—Poolside food with a tropical flair

Quick service

- Tuk Tuk Market—Lobby marketplace offering coffee, breakfast items, pastries and other delights

And more

- Room Service—24 hours

^{**}Must be 21+ with valid photo ID to purchase and consume alcoholic beverages. [†], ^{††}See back cover for details.

**EXCLUSIVE THEME
PARK BENEFITS**

**EARLY PARK
ADMISSION***
Separate theme park admission
required. Select attractions.

**FREE
WATER TAXIS*
AND SHUTTLES**

**RESORT-WIDE
CHARGING
PRIVILEGES**

**FREE
MERCHANTISE
DELIVERY**

**DEDICATED WALKING PATH TO
UNIVERSAL VOLCANO BAY**



LOEWS SAPPHIRE FALLS RESORT

SIGNATURE COLLECTION

\$\$\$

This island-inspired escape gives guests a truly extraordinary Caribbean experience.

**DEDICATED WALKING
PATH TO UNIVERSAL
VOLCANO BAY**

Accommodations

- 1,000 standard rooms and suites
- Standard rooms feature two queen beds that sleep up to five with rollaway or one king bed and a pull-out sofa that sleeps up to four††
- Select from multiple suites for even more space, including kids' suites with a separate kids' bedroom accessible only through the parents' room

Recreation

- White-sand beach, zero-entry pool, hot tub, fire pit, kids' play area, and cabana rentals
- Complimentary fitness center
- Game room (Fees apply)

Dining at Sapphire Falls Resort

Full service

- Amatista Cookhouse—Caribbean inspired cuisine
- Strong Water Tavern—Tapas-style dining and rum bar**
- Drhum Club Kantine—Fresh seafood and more, poolside.

Quick service

- New Dutch Trading Co.—Craft sandwiches, coffee, pastries

And more

- Room Service—24 hours

Separate theme park admission
required for park entry.

**Must be 21+ with valid photo ID to purchase and consume alcoholic beverages.

**EXCLUSIVE THEME
PARK BENEFITS**

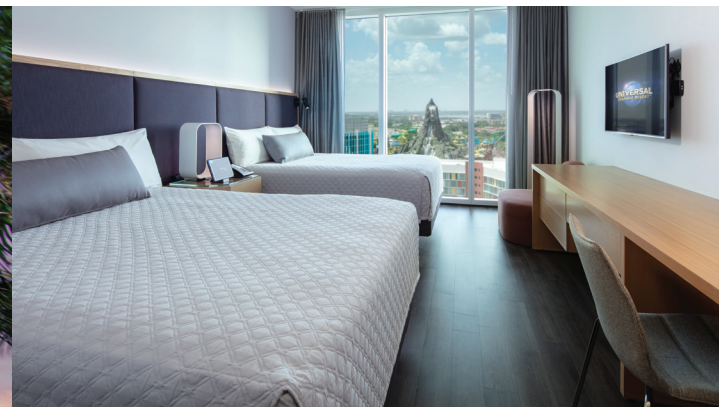
**EARLY PARK
ADMISSION***
Separate theme park admission
required. Select attractions.

**FREE
SHUTTLES**

**RESORT-WIDE
CHARGING
PRIVILEGES**

**FREE
MERCHANDISE
DELIVERY**

**DEDICATED WALKING PATH TO
UNIVERSAL VOLCANO BAY**



UNIVERSAL AVENTURA HOTEL

PRIME VALUE HOTELS

\$\$

Sleek. Stylish.
Just plain cool.

**DEDICATED WALKING
PATH TO UNIVERSAL
VOLCANO BAY**

Accommodations

- 600 standard rooms and suites
- Smart in-room technology with tablet controlled media, lights and more
- Standard rooms feature two queen beds that sleep up to four or one king bed and a pull-out sofa that sleeps up to four
- Kids' suites with a separate kids' sleeping area accessible only through the parents' room
- Skyline View Rooms

Recreation

- Pool, a splash zone for kids, a fire pit for fun after the sun
- Complimentary fitness center

Dining at Aventura Hotel

Full service

- Bar 17 Bistro—Rooftop bar** with small plates, cocktails and amazing views

Quick service

- Urban Pantry—Food hall with a variety of dining options with menus and flavors for every palate
- Starbucks®—Coffee and more in the lobby

And more

- Bar Sol—Convenient, carefree poolside escape
- barVentura—Contemporary and inviting lobby bar**
- Pizza—Delivered to your room

Separate theme park admission
required for park entry.

**Must be 21+ with valid photo ID to purchase and consume alcoholic beverages.

**EXCLUSIVE THEME
PARK BENEFITS**

**EARLY PARK
ADMISSION***
Separate theme park admission
required. Select attractions.

**FREE
SHUTTLES**

**RESORT-WIDE
CHARGING
PRIVILEGES**

**FREE
MERCHANDISE
DELIVERY**

**DEDICATED WALKING PATH TO
UNIVERSAL EPIC UNIVERSE**



UNIVERSAL STELLA NOVA RESORT



PRIME VALUE HOTELS

\$\$

Inspired by the infinite vastness of the unknown universe, Stella Nova Resort, represents another galaxy.

It is located adjacent to Universal Epic Universe. All of Universal Orlando's theme parks and Universal CityWalk are accessible via convenient and complimentary shuttles.

DEDICATED WALKING PATH TO UNIVERSAL EPIC UNIVERSE

(Separate theme park admission required for park entry.)

Accommodations

- 750 standard rooms
- Standard rooms feature two queen beds that sleep up to four
- Two-compartment, three fixture bathroom. Smart room technology for automated heating and air conditioning

Recreation

- Huge resort-style pool, kids' splash pad area, poolside movies at night (weather permitting), a fire pit, hot tub and outdoor games
- Complimentary fitness center
- Game room (Fees apply)

Dining at Stella Nova Resort

Quick service

- Cosmos Cafe and Market—Grab & go and quick service outlet offering American classics like burgers, paninis, fried chicken and pastas
- Galaxy Bar and Galaxy Grill—Pool bar** with burgers, salads, a full bar and more

And more

- Nova Bar—Lobby bar** offering custom crafted cocktails
- Pizza—Delivered directly to your room

**Must be 21+ with valid photo ID to purchase and consume alcoholic beverages.

**EXCLUSIVE THEME
PARK BENEFITS**

**EARLY PARK
ADMISSION***
Separate theme park admission
required. Select attractions.

**FREE
SHUTTLES**

**RESORT-WIDE
CHARGING
PRIVILEGES**

**FREE
MERCHANDISE
DELIVERY**



UNIVERSAL TERRA LUNA RESORT

PRIME VALUE HOTELS

\$\$

Inspired by the thrill of exploring the unknown, Terra Luna Resort, represents another world.

It is located adjacent to Universal Epic Universe. All of Universal Orlando's theme parks and Universal CityWalk are accessible via convenient and complimentary shuttles.

(Separate theme park admission required for park entry.)

Accommodations

- 750 standard rooms
- Standard rooms feature two queen beds that sleep up to four
- Two-compartment, three fixture bathroom. Smart room technology for automated heating and air conditioning

Recreation

- Zero-entry resort style pool, with pop up jets, hot tub and outdoor fire pit
- Complimentary fitness center
- Game room (Fees apply)

Dining at Terra Luna Resort

Quick service

- Omega Cafe and Market—Offering grab & go items, along with burgers, paninis, fried chicken, pastas and other American classics
- Moonrise Bar and Moonrise Grill—Pool bar** with delicious sandwiches, a full bar and more

And more

- Luna Bar—Specialty cocktails, wine and beer**
- Pizza —Delivered directly to your room

**Must be 21+ with valid photo ID to purchase and consume alcoholic beverages.

**EXCLUSIVE THEME
PARK BENEFITS**

**EARLY PARK
ADMISSION***

Separate theme park admission
required. Select attractions.

**FREE
SHUTTLES**

**RESORT-WIDE
CHARGING
PRIVILEGES**

**FREE
MERCHANDISE
DELIVERY**

**DEDICATED WALKING PATH TO
UNIVERSAL VOLCANO BAY**



UNIVERSAL CABANA BAY BEACH RESORT

VALUE INNS AND SUITES

\$\$

Enjoy vibrant, retro style designed for fun and affordability.

**DEDICATED WALKING
PATH TO UNIVERSAL
VOLCANO BAY**

Adjacent to Universal's water theme park

Separate theme park admission
required for park entry.

Accommodations

- 2,200 standard rooms and suites
- Standard rooms feature two queen beds that sleep up to four
- Family suites sleep up to six and include a kitchenette, pullout sofa and compartmentalized bathroom
- 2-bedroom suites sleep up to eight and include a kitchenette, a pullout sofa and two full bathrooms
- Volcano Bay View Rooms

Recreation

- Two immense pools, one with a waterslide, one with a winding river, cabana rentals, kid-friendly areas, activities
- Galaxy Bowl—10-lane bowling alley (Fees apply)
- Complimentary fitness center
- Game room (Fees apply)

**Must be 21+ with valid photo ID to purchase and consume alcoholic beverages.

Dining at Cabana Bay Beach Resort

Full service

- Galaxy Bowl Restaurant—American favorites: wings, pizza, and burgers, made-to-order
- The Hideaway Bar & Grill—Poolside sandwiches, cocktails** and more

Quick service

- Bayliner Diner—Offers a selection of deli items, burgers, pizza, salad, desserts and more
- Atomic Tonic—Poolside bar** with sandwiches, wraps, salads and more
- Starbucks®—Coffee and more in the lobby
- Shakes Malt Shoppe—Smoothies, milkshakes, ice cream and more

And more

- Swizzle Lounge—The lobby's retro bar**
- Delizioso Pizza—Pizzas, salads and dessert delivered to your room (Available during limited hours)

**EXCLUSIVE THEME
PARK BENEFITS**

**EARLY PARK
ADMISSION***
Separate theme park admission
required. Select attractions.

**FREE
SHUTTLES**

**RESORT-WIDE
CHARGING
PRIVILEGES**

**FREE
MERCHANTISE
DELIVERY**



UNIVERSAL ENDLESS SUMMER RESORT - SURFSIDE INN AND SUITES

VALUE INNS AND SUITES



Step into the surf lifestyle at this extra-affordable, free-spirited hotel.

Accommodations

- 750 standard rooms and suites
- Standard rooms feature two queen beds that sleep up to four
- 2-bedroom suites sleep up to six and include a kitchenette, a cool picnic table for meals and compartmentalized bathroom

Recreation

- Surfboard-shaped pool with poolside activities
- Complimentary fitness center
- Game room (Fees apply)

Dining at Surfside Inn and Suites

Quick service

- Beach Break Cafe—A food court offering multiple stations with convenient and tasty options
- Starbucks®—Coffee and more in the lobby

And more

- Sand Bar—Poolside bar** offering frozen drinks, cocktails, wine and beer
- Pizza—Delivered to your room (available during limited hours)

**Must be 21+ with valid photo ID to purchase and consume alcoholic beverages.

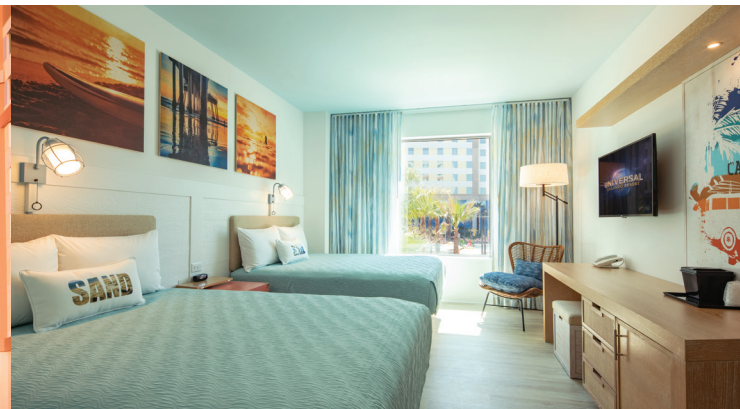
**EXCLUSIVE THEME
PARK BENEFITS**

**EARLY PARK
ADMISSION***
Separate theme park admission
required. Select attractions.

**FREE
SHUTTLES**

**RESORT-WIDE
CHARGING
PRIVILEGES**

**FREE
MERCHANDISE
DELIVERY**



UNIVERSAL ENDLESS SUMMER RESORT - DOCKSIDE INN AND SUITES

VALUE INNS AND SUITES



Escape to the perfect sunset at this extra-affordable, fun and relaxing getaway.

Accommodations

- 2,050 standard rooms and suites
- Standard rooms feature two queen beds that sleep up to four
- 2-bedroom suites sleep up to six and include a kitchenette, a cool picnic table for meals and compartmentalized bathroom

Recreation

- Two huge pools with poolside activities and a splash pad for kids
- Complimentary fitness center
- Game room (Fees apply)

Dining at Dockside Inn and Suites

Quick service

- Pier 8 Market—Food court offering multiple stations with convenient and tasty options
- Starbucks®—Coffee and more in the lobby

And more

- The Oasis Beach Bar—A laid-back poolside bar**
- Wave Makers Pool Bar—Another great poolside watering hole**
- Sunset Lounge—Lobby bar** offering craft cocktails and beer
- Pizza—Delivered to your room (available during limited hours)

**Must be 21+ with valid photo ID to purchase and consume alcoholic beverages.



A NEW ADVENTURE EVERY DAY

When you stay with Universal, it's just a hop between the adrenaline-pumping thrills of four amazing theme parks, Universal CityWalk and your hotel. Universal Islands of Adventure, Universal Studios Florida, Universal Volcano Bay, and Universal Epic Universe offer days of endless awesome. Universal hotel guests enjoy more ride time, more fun time and more family time every day of your vacation.



Contact Your Preferred Travel Professional

*Valid theme park admission required. Valid only at participating rides and attractions in Universal Studios Florida and Universal Islands of Adventure, during normal theme park operating hours. Not valid at Universal Volcano Bay or at Universal Epic Universe. Excludes separately ticketed events. Park-to-Park admission required to board the Hogwarts Express™. Benefit is non-transferable and valid only for guests of Loews Royal Pacific Resort, Hard Rock Hotel® and Loews Portofino Bay Hotel, for the number of guests staying in the room for the length of hotel stay. Express ride access is a separate line with a shorter wait time (when compared to the average estimated wait time of the regular lines) at participating rides and attractions. Wait times are estimates that may vary due to weather, demand, and downtimes and are not guaranteed. Present valid room key card (or other authorized Express validation) to the attendant upon entering the Express queue for a participating ride and attraction. Parks, attractions, wait/operational times, and benefits are subject to substitutions, change, availability, capacity and/or cancellation without notice, and not guaranteed. Additional restrictions apply. †Requires theme park admission. Valid only at participating rides and attractions in Universal Studios Florida and Universal Islands of Adventure, during normal theme park operating hours. Not valid at Universal Volcano Bay or at Universal Epic Universe. Excludes separately ticketed events. Park-to-Park admission required to board the Hogwarts Express™. Benefit is non-transferable and valid only for guests of Loews Royal Pacific Resort, Hard Rock Hotel® and Loews Portofino Bay Hotel, for the number of guests staying in the room for the length of hotel stay. Express ride access is a separate line with a shorter wait time at participating rides and attractions. Present valid room key card to the attendant upon entering the Express queue for a participating ride and attraction. Parks, attractions, operational times, and benefits are subject to substitutions, change, availability, capacity and/or cancellation without notice, and not guaranteed. Additional restrictions may apply. †Based on the rounded weighted average price of a 2-Park Universal Express Unlimited Pass ranging between \$129.99 and \$389.99 per person. †† Floor plans may vary. Maximum occupancies may require a rollaway at \$35 plus tax per day. Only one rollaway is allowed per room. Available on a first-come, first-served basis. Additional charges apply for more than 2 adult guests per room. †‡ Only merchandise purchased from select Universal Orlando owned and operated theme park stores are eligible for Hotel Delivery. Hotel Delivery concludes daily at 5pm and the service cannot be used the day of guest check out. Additional restrictions apply and are subject to change without notice. © 2026 UCF Hotel Venture V. UNIVERSAL TM & © Universal Studios. ENDLESS SUMMER registered trademarks. Bruce Brown Films, LLC. Aventura Hotel TM & © 2026 UCF Hotel Venture IV. Cabana Bay Beach Resort TM & © 2026 UCF Hotel Venture II. Sapphire Falls Resort TM & © 2026 UCF Hotel Venture III. Hard Rock Hotel® Hard Rock Cafe International (USA), Inc. Portofino Bay Hotel and Royal Pacific Resort TM & © 2026 UCF Hotel Venture. © 2026 Starbucks Coffee Company. How To Train Your Dragon © 2026 DreamWorks Animation LLC. Jurassic World franchise TM & © 2026 Universal City Studios LLC and Amblin Entertainment, Inc. Minions TM & © Universal Studios. Universal elements and all related indicia TM & © 2026 Universal Studios. All rights reserved. 26-UOR-7390683-F2/RG/AT